

BACTERIAL CHARGE IN THE SURGERY SETTING OF THE COUNTY EMERGENCY HOSPITAL OF VÂLCEA BETWEEN 2000 AND 2006

G. SĂRDĂRESCU

County Emergency Hospital of Vâlcea.

Abstract: The bacterial charge will be analysed in the surgery setting of the County Emergency Hospital of Vâlcea, taking into account the number of surgeries accomplished. The main bacterial germs presented in this study will be isolated from the cultures made.

Keywords: self control, biological samples, germs

Rezumat: Se analizează încărcarea bacteriană în secțiile de chirurgie ale Spitalului Județean de Urgență Vâlcea, pe număr de intervenții chirurgicale. Se prezintă principalii germeni bacterieni izolați din culturile efectuate.

Cuvinte cheie: autocontrol, probe biologice, germeni

INTRODUCTION

I analysed the bacterial charge in the surgery setting of the County Emergency Hospital of Vâlcea, between 2000 and 2006.

MATERIAL AND METHOD

I used self control data collected from the Department for the Prevention and Control of the Nosocomial Infections of the County Emergency Hospital of Vâlcea, (1) as well as the data resulted from the biological samples taken from the patients.

RESULTS AND DISCUSSIONS

Table no. 1. Number of surgeries performed in the surgery setting of the County Emergency Hospital of Vâlcea between 2000 and 2006

Year	Surgery	Orthopaedics	Urology	Total
2000	2247	1475	393	4115
2001	2259	1625	456	4340
2002	1783	1647	345	3775
2003	2198	1683	312	4193
2004	2394	1702	265	4361
2005	2293	1559	331	4183
2006	1632	1140	262	3034
Total	14806	10831	2364	28001

The self-control data are the following:

Table no. 2. Repartition of the self-control data per settings, in the year 2000.

Setting	Total of samples	Positive	Negative
Surgery	43	7	36
Orthopaedics	54	6	48
Urology	12	4	8
Total	109	17	92

Picture no. 1. Repartition of the self-control data per settings, in the year 2000.

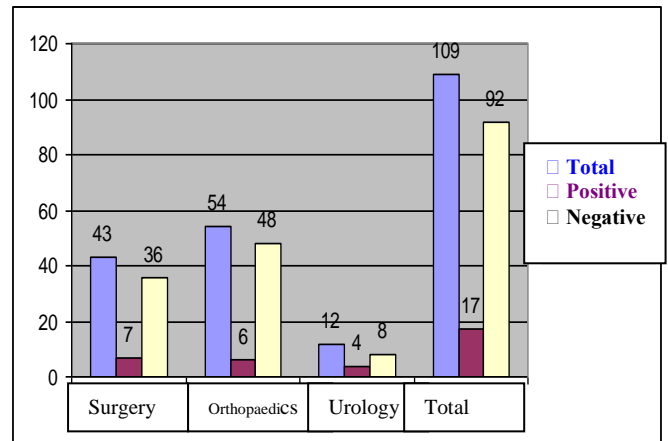
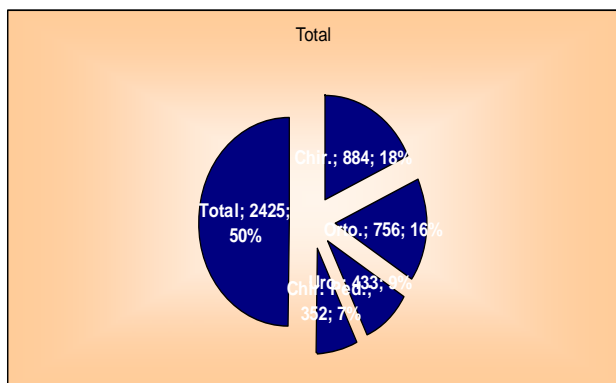


Table no. 3. Total of self-controls between 2000 and 2006

Setting	Total of samples	Positive	Negative
Surgery	884	129	755
Orthopaedics	756	91	665
Urology	433	53	380
Paediatrics surgery	352	87	265
TOTAL	2425	360	2065

CLINICAL ASPECTS

Picture no. 2. Self-control data repartition between 2000 and 2006.



Picture no. 3. Positive results distribution between 2000 and 2006

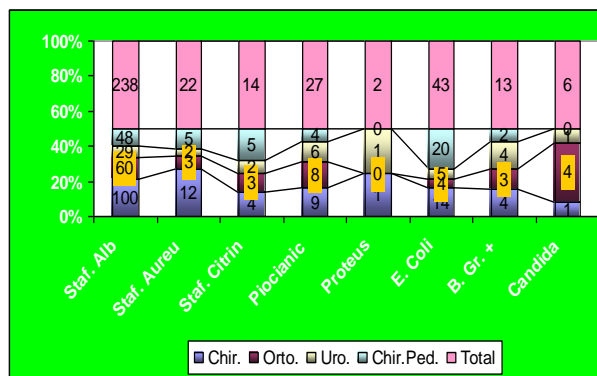


Table no. 4. Positive results distribution between 2000 and 2006.

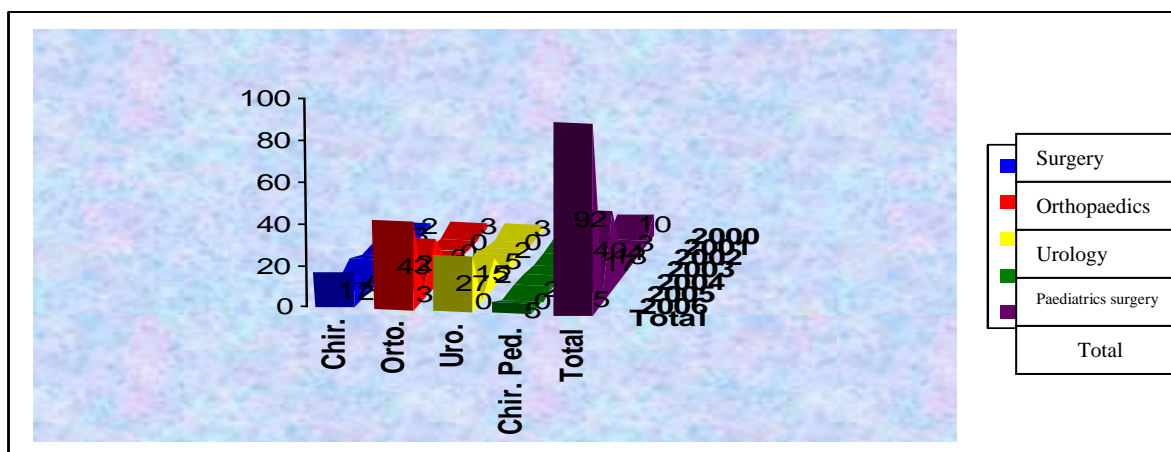
Setting	Staph. Alb. N.	Staph. Aureu	Staph. Citrin	Pyocyanic	Proteus	E. Coli	B. Gr. +	Candida
Surgery	100	12	4	9	1	14	4	1
Orthopaedics	60	3	3	8	0	4	3	4
Urology	29	2	2	6	1	5	4	1
Paediatrics surgery	48	5	5	4	0	20	2	0
Total	238	22	14	27	2	43	13	6

Below, I will present the situation of the nosocomial infections gathered from the data of the **Department for Prevention and Control of the Nosocomial Infections** of the County Emergency Hospital of Vâlcea:

Table no. 5. Distribution of the nosocomial infections between 2000 and 2006.

Setting	2000	2001	2002	2003	2004	2005	2006	Total
Surgery	2	3	2	2	6	0	2	17
Orthopaedics	3	0	0	6	8	23	3	43
Urology	3	0	2	5	2	15	0	27
Paediatrics Surgery	2	0	0	0	1	2	0	5
Total	10	3	4	13	17	40	5	92

Picture no. 4. Distribution of the nosocomial infections between 2000 and 2006.

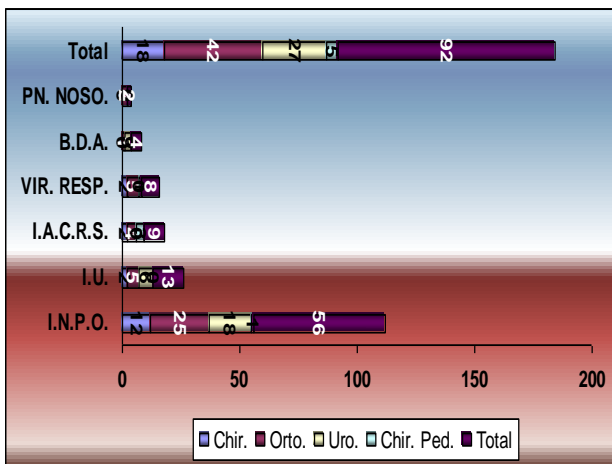


CLINICAL ASPECTS

Table no. 6. Types of nosocomial infections developed in the County Emergency Hospital of Vâlcea between 2000 and 2006, collected from the Department for Prevention and Control of the Nosocomial Infections:

Setting	INPO.	UI	URI	Respiratory virosis	Acute diarrhoea	NP	Total
Surgery	12	2	2	2	0	0	18
Orthopaedics.	25	5	4	5	1	2	42
Urology	18	6	0	0	3	0	27
Paediatrics surgery	1	0	3	1	0	0	5
Total	56	13	9	8	4	2	92

Picture no. 6. Types of nosocomial infections developed in the County Emergency Hospital of Vâlcea between 2000 and 2006, collected from the Department for Prevention and Control of the Nosocomial Infections:



REFERENCES

1. Department for the Prevention and Control of the Nosocomial Infections of the County Emergency Hospital of Vâlcea.